

Japan Arts Council

Grant Program Annual Report 2024-2025



Going Beyond —



Message from the President

Fiscal year 2024 marks 35 years since the Japan Arts Council began providing grants for culture and the arts in fiscal year 1990, using the Japan Arts Fund, established via public-private partnerships.

Over the years, we have collaborated with cultural and artistic organizations, theaters, concert halls, and local stakeholders to promote activities that foster the creation and dissemination of culture and the arts.

Since fiscal year 1996, we have been responsible for grant programs subsidized by the Agency for Cultural Affairs, supporting a broad range of initiatives: the creation of performing arts, international performing arts activities, nationwide art outreach, fostering creators, enhancement of theaters and concert halls, and the production of superior Japanese films. In fiscal year 2023, the Japan Creator Support Fund was established with a subsidy from the Agency for Cultural Affairs, launching new support programs in fiscal year 2024. The Council's support for culture and the arts is extensive, and we recognize our responsibility to meet the rising expectations of the public.

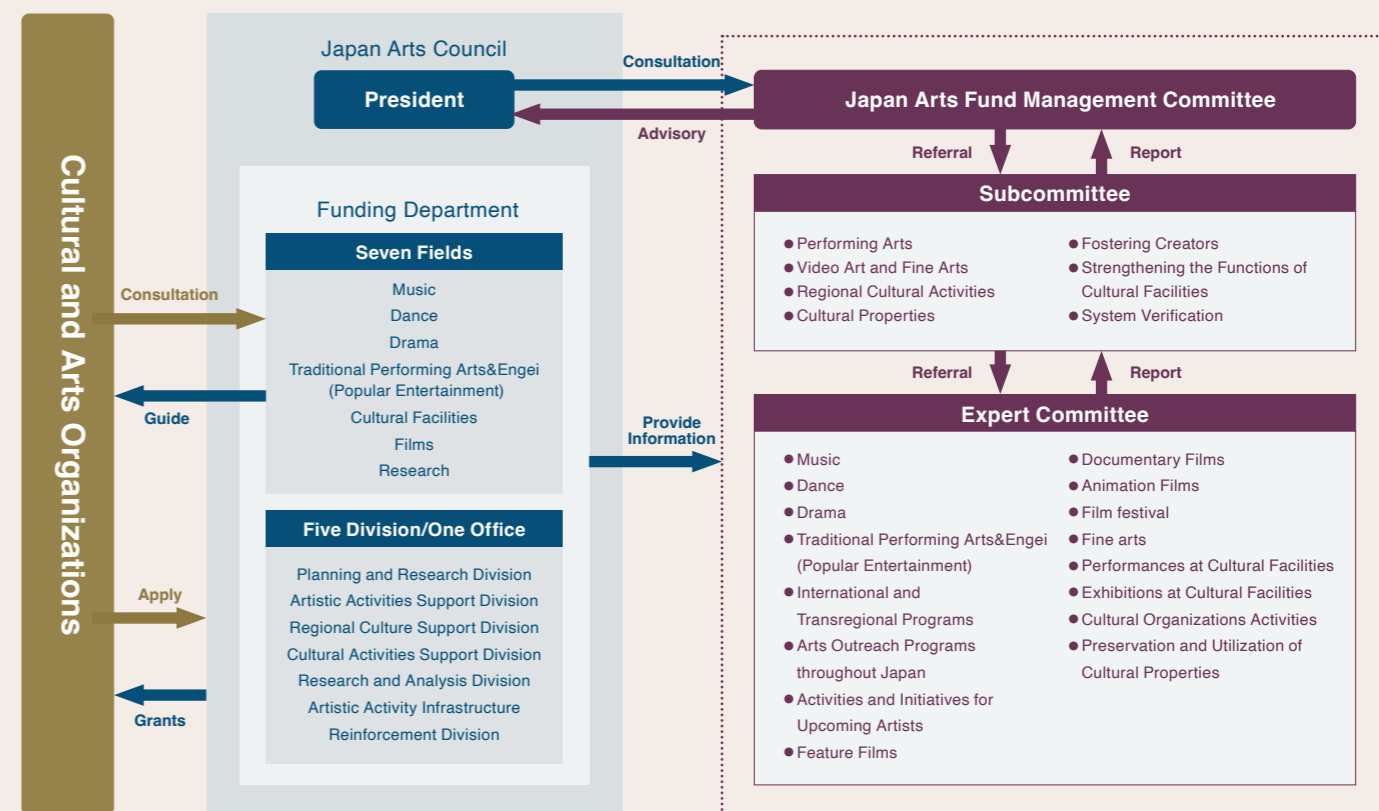
Building on our inaugural initiative last year, we have prepared this annual report to present the status and achievements of the Council's support projects in fiscal year 2024. We hope this report not only offers a comprehensive overview of our efforts but also serves as a foundation for further enhancing the quality of our support projects in the future.

We invite you to make use of this report and thank you for your continued understanding and support of the Council's activities.

January 2026
President, Japan Arts Council
HASEGAWA Mariko

Organizational Structure

The following structure has been established to ensure the proper administration of grant funding.

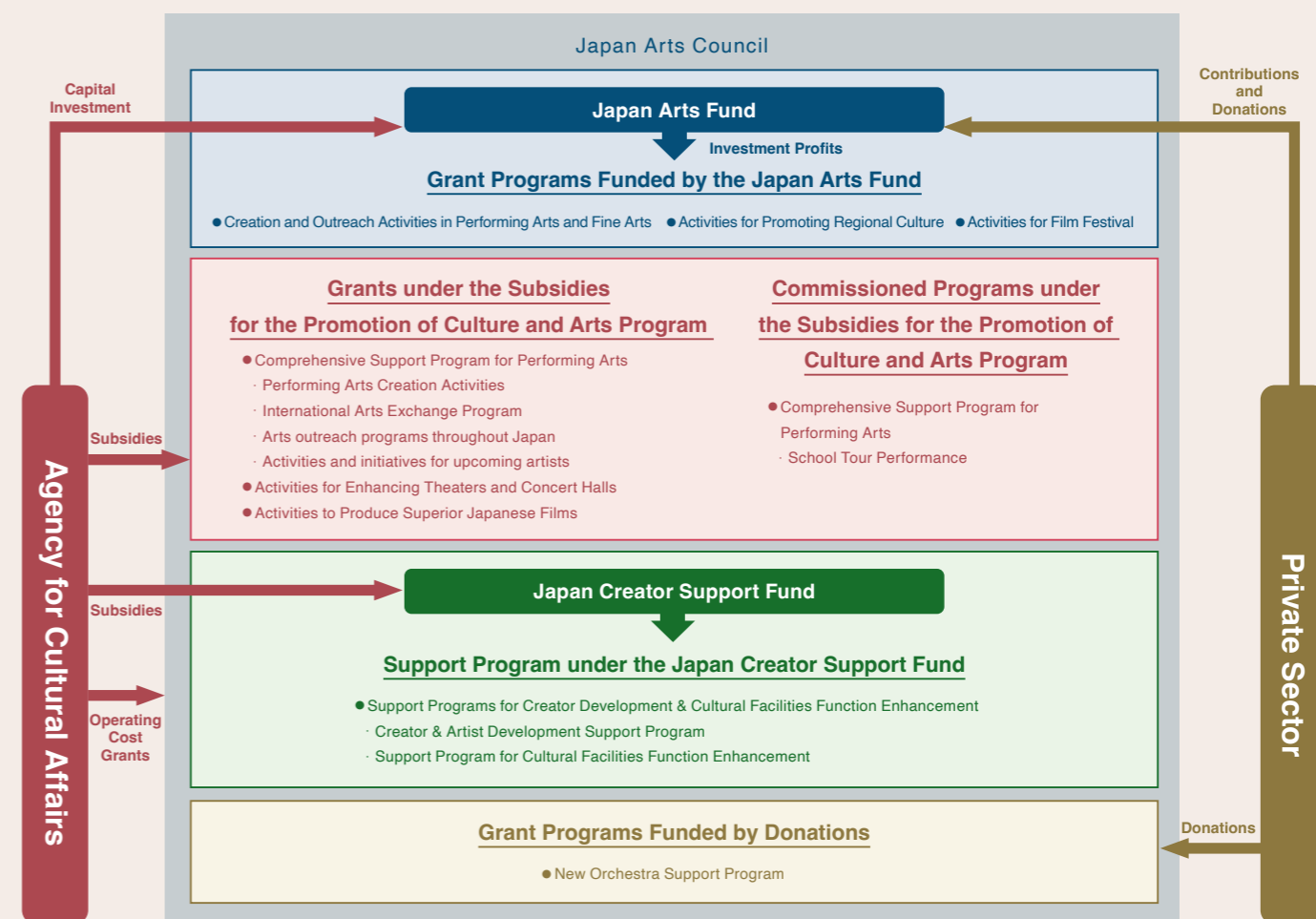


Timeline

- FY1989 ● Establishment of the Japan Arts Fund
- FY1990 ● Establishment of the Funding Department
Launch of the grant programs of the Fund
- FY1996 ● Launch of the grant programs financed by the government
- FY2003 ● Change of the Council's status to an independent administrative institution
- FY2011 ● Trial implementation of a Japanese version of the Arts Council in England(assignment of Program Directors [PD] and Program Officers [PO], creation and publication of screening criteria, implementation of post-event evaluations, etc.)Establishment of the music and dance fields
- FY2012 ● Establishment of the drama and traditional performing arts & Engei (Popular Entertainment) fields
- FY2016 ● Full-scale implementation of a Japanese version of the Arts Council in England (increasing the number of POs in each field, appointing some full-time officers, etc.)
- FY2018 ● Establishment of the research field
- FY2021 ● Establishment of a Special Subcommittee on the Japan Arts Fund Management Committee (Celebrating the 10th anniversary of the implementation of a Japanese version of the Arts Council in England, the subcommittee will discuss the future direction of its support programs.)
- FY2023 ● Establishment of the cultural institutions and film fields
Establishment of the Fund for Strengthening the Foundation for Cultural and Artistic Activities
- FY2024 ● Launch of grant programs under the Fund for Strengthening the Foundation for Cultural and Artistic Activities(Launch of programs to foster creators and strengthen the functions of cultural facilities)

Program Structure

To support arts and cultural activities, we implement the following programs.



Japan Arts Fund Grants	Creation and Outreach Activities in Performing Arts and Fine Arts	<ul style="list-style-type: none"> Creation and Outreach Activities in Contemporary Performing Arts (Music / Dance / Drama) Public Presentation of Traditional and Popular Performing Arts 	<ul style="list-style-type: none"> Creation and Outreach Activities in Fine Arts and Media Arts *1 Multidisciplinary Collaborative Arts Creation Activities 	P.09 ▶
	Activities for Promoting Regional Culture	<ul style="list-style-type: none"> Performances and Exhibitions at Regional Cultural Facilities (Cultural Hall Performances) Performances and Exhibitions at Regional Cultural Facilities (Museum and Other Exhibitions) Activities of Amateur and Other Cultural Organizations 	<ul style="list-style-type: none"> Preservation and Utilization Activities for Historic Villages, Townscapes, and Cultural Landscapes Preservation and Utilization Activities for Folk Cultural Properties Preservation and Transmission Activities for Traditional Craft Techniques and Cultural Property Conservation Techniques 	P.10 ▶
	Activities for Film Festival	<ul style="list-style-type: none"> Film festival Japanese Film Screening Activities 		P.12 ▶

Projects funded by the Subsidies for the Promotion of Culture and Arts Program	Comprehensive Support Program for Performing Arts	Performing Arts Creation Activities	<ul style="list-style-type: none"> Multi-Year Planning Support Performance Project Support (General Category) Performance Project Support (Step-Up Category) 		P.13 ▶
		International Arts Exchange Program	<ul style="list-style-type: none"> Overseas Performances International Co-Production Performances (Overseas Performances) 	<ul style="list-style-type: none"> International Co-Production Performances (Domestic Performances) International Festivals 	P.14 ▶
		Arts outreach programs throughout Japan	<ul style="list-style-type: none"> Performance and Related Projects Implemented by National-Level Umbrella Organizations Digital Archive Support for Revenue Generation 		P.16 ▶
		Activities and initiatives for upcoming artists			P.16 ▶
		School Tour Performance	<ul style="list-style-type: none"> Single-Year (Category A) Multi-Year (Category B) Remote Islands, Rural Areas, and Small Schools (Category C) 		P.19 ▶
		Activities for Enhancing Theaters and Concert Halls	<ul style="list-style-type: none"> Comprehensive Support for Enhancement of Theaters and Concert Halls Program Regional Core Theatres and Concert Halls Revitalization Program 	<ul style="list-style-type: none"> Co-Production Support Program Theatre and Concert Hall Network Enhancement Program 	P.17 ▶
		Activities to Produce Superior Japanese Films *2	<ul style="list-style-type: none"> Feature Films Documentary Films Animated Films 		P.18 ▶

Established under the FY2023 Supplementary Budget	Projects Funded by the Japan Creator Support Fund	Support Programs for Creator Development & Cultural Facilities Function Enhancement	Creator & Artist Development Support Program		P.20 ▶
			Support Program for Cultural Facilities Function Enhancement		P.20 ▶

Projects Funded by Donations	New Orchestra Support Program		P.20 ▶
------------------------------	-------------------------------	--	--------

*1 Program name changed to "Visual Arts Creation and Outreach Activities." *2 Program name changed from "Film Creation Activity Support Program: Support for Film Production."

Japan Arts Fund Grants

Number of Projects Supported

457

Total Amount of Support

739.26 million yen

Projects funded by the Subsidies for the Promotion of Culture and Arts Program

Number of Projects Supported

629

Total Amount of Support

10,208.70 million yen

*Includes commissioned projects (school tour performances)

Projects Funded by the Japan Creator Support Fund

(A continuous support program spanning three years from FY2024 to FY2026)

Number of Projects Supported

42

Total Amount of Support (Three-Year Total, Planned)

5,840.31 million yen

Projects Funded by Donations

(A continuous support program spanning three years from FY2024 to FY2025)

Number of Projects Supported

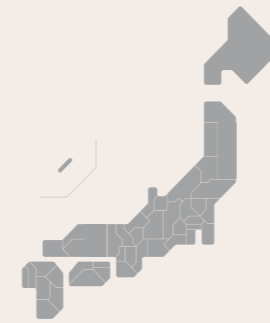
3

Total Amount of Support

362.06 million yen

*Including one project carried over from the previous fiscal year

Grant Programs Funded by the Japan Arts Fund and the Subsidies for the Promotion of Culture and Arts Program



Domestic

Implementation Areas

47 Prefectures



Overseas

Implementation Areas

29 nations and regions 83 cities

Number of Audience

Over 3.95 million

Number of Audience

Over 110,000

Number of Performances

Over 7,700

Number of Performances

331

Number of Exhibition Days

2,385

Commissioned Projects Funded by the Subsidies for the Promotion of Culture and Arts Program (School Tour Performance)



Number of Schools

1,672

Number of Audience

Over 390,000

Grant Programs Funded by the Japan Arts Fund

- Due to rounding to the nearest whole unit, totals may not match exactly.
 - The number of audience includes visitors to exhibitions and attendees at lectures.

Creation and Outreach Activities in Performing Arts and Fine Arts

● Application, selection, and grant status by grant category and field

Grant category	Field	Number of Applications		Number of Selections		Amount planned to be paid (1,000 yen)		Number of Grants Awarded		Amount actually paid (1,000 yen)	
			(%)		(%)		(%)		(%)		(%)
Creation and Outreach Activities in Contemporary Performing Arts		543	82.0	199	79.3	407,500	85.2	185	78.7	387,240	85.4
	Music	149	22.5	53	21.1	122,500	25.6	51	21.7	118,240	26.1
	Dance	79	11.9	33	13.1	60,000	12.5	26	11.1	49,000	10.8
	Drama	315	47.6	113	45.0	225,000	47.0	108	46.0	220,000	48.5
Public Presentation of Traditional and Popular Performing Arts		64	9.7	34	13.5	47,800	10.0	34	14.5	47,800	10.5
Creation and Outreach Activities in Fine Arts and Media Arts		21	3.2	8	3.2	9,500	2.0	8	3.4	9,141	2.0
Multidisciplinary Collaborative Arts Creation Activities		34	5.1	10	4.0	13,500	2.8	8	3.4	9,500	2.1
Total		662	100	251	100	478,300	100	235	100	453,681	100

● Number of grants awarded, number of performances, number of exhibition days, and number of audience by grant field and genre

Field	Genre	Number of Grants Awarded		Number of Performances		Number of Exhibition Days		Number of Audience	
			(%)		(%)		(%)		(%)
Music		51	21.7	292	17.7			70,498	26.7
	Orchestra	10	4.3	19	1.1			13,204	5.0
	Opera	6	2.6	20	1.2			10,205	3.9
	Chamber music	17	7.2	55	3.3	-		10,427	3.9
	Chorus	1	0.4	3	0.2			4,078	1.5
	Wind Orchestra	4	1.7	7	0.4			3,047	1.2
	Others	13	5.5	188	11.4			29,537	11.2
Dance		26	11.1	103	6.2			14,909	5.6
	Ballet	6	2.6	10	0.6			6,663	2.5
	Contemporary dance	17	7.2	75	4.5	-		7,287	2.8
	Butoh	1	0.4	6	0.4			314	0.1
	Others	2	0.9	12	0.7			645	0.2
Drama		108	46.0	1,042	63.0			126,728	48.0
	Contemporary theater	95	40.4	820	49.6			84,920	32.1
	Children's theater	6	2.6	182	11.0			30,090	11.4
	Puppet show	3	1.3	30	1.8			9,460	3.6
	Musical	0	0.0	0	0.0			0	0.0
	Others	4	1.7	10	0.6			2,258	0.9
Traditional performing arts		27	11.5	63	3.8			16,920	6.4
	Classical theater	14	6.0	37	2.2			12,967	4.9
	Hogaku (Traditional Japanese music)	8	3.4	11	0.7			1,427	0.5
	Buyo (Japanese classical dance)	1	0.4	6	0.4			233	0.1
	Gagaku (Japanese court music)	1	0.4	1	0.1			390	0.1
	Shomyo (Japanese Buddhist chant)	0	0.0	0	0.0			0	0.0
	Others	3	1.3	8	0.5			1,903	0.7
Engei (popular entertainment)		7	3.0	118	7.1			6,322	2.4
	Rakugo (traditional comic storytelling)	2	0.9	85	5.1			2,710	1.0
	Kodan (historical narrative)	0	0.0	0	0.0			0	0.0
	Others	5	2.1	33	2.0			3,612	1.4
Visual arts and media arts		8	3.4	-	-	212	100	25,630	9.7
Multidisciplinary collaborative arts		8	3.4	36	2.2	-	-	3,203	1.2
Total		235	100	1,654	100	212	100	264,210	100



Grant Programs Funded by the Japan Arts Fund

- Due to rounding to the nearest whole unit, totals may not match exactly.
- The number of audience includes visitors to exhibitions and attendees at lectures.

Activities for Promoting Regional Culture

● Application, selection and grant status by grant category

Grant category	Number of Applications	(%)	Number of Selections	(%)	Amount planned to be paid (1,000 yen)	(%)	Number of Grants Awarded	(%)	Amount actually paid (1,000 yen)	(%)
Performances and Exhibitions at Regional Cultural Facilities (Cultural Hall Performances)	82	19.2	55	29.4	74,500	29.2	55	30.2	74,500	30.6
Performances and Exhibitions at Regional Cultural Facilities (Museum and Other Exhibitions)	116	27.2	43	23.0	96,000	37.6	39	21.4	85,577	35.1
Activities of Amateur and Other Cultural Organizations	191	44.8	62	33.2	61,200	24.0	61	33.5	60,200	24.7
Preservation and Utilization Activities for Historic Villages, Townscapes, and Cultural Landscapes	12	2.8	10	5.3	7,200	2.8	10	5.5	7,166	2.9
Preservation and Utilization Activities for Folk Cultural Properties	18	4.2	13	7.0	10,100	4.0	13	7.1	10,100	4.1
Preservation and Transmission Activities for Traditional Craft Techniques and Cultural Property Conservation Techniques	7	1.6	4	2.1	6,500	2.5	4	2.2	6,043	2.5
Total	426	100	187	100	255,500	100	182	100	243,586	100

● Performances and Exhibitions at Regional Cultural Facilities (Cultural Hall Performances)
Performances and Exhibitions at Regional Cultural Facilities (Museum and Other Exhibitions)
Activities of Amateur and Other Cultural Organizations
Number of venues, number of performances, number of exhibition days, and number of audience by grant category and region

Grant category	Region	Number of Venues	(%)	Number of Performances	(%)	Number of Exhibition Days	(%)	Number of Audience	(%)
Performances and Exhibitions at Regional Cultural Facilities (Cultural Hall Performances)		55	31.3	102	35.8			42,113	9.7
	Hokkaido	0	0.0	0	0.0			0	0.0
	Tohoku	3	1.7	5	1.8			2,030	0.5
	Northern Kanto and Koshin	4	2.3	4	1.4			2,953	0.7
	Southern Kanto	10	5.7	11	3.9			7,037	1.6
	Hokuriku	3	1.7	4	1.4			1,471	0.3
	Tokai	8	4.5	15	5.3			7,173	1.7
	Kinki	9	5.1	28	9.8			11,476	2.6
	Chugoku	8	4.5	17	6.0			3,421	0.8
	Shikoku	3	1.7	6	2.1			1,833	0.4
	Kyushu	5	2.8	5	1.8			3,602	0.8
	Okinawa	0	0.0	0	0.0			0	0.0
	Others (universities or nationwide)	2	1.1	7	2.5			1,117	0.3
Performances and Exhibitions at Regional Cultural Facilities (Museum and Other Exhibitions)		39	22.2			2,173	100	346,716	79.9
	Hokkaido	1	0.6			81	3.7	2,283	0.5
	Tohoku	2	1.1			92	4.2	7,853	1.8
	Northern Kanto and Koshin	10	5.7			602	27.7	79,856	18.4
	Southern Kanto	5	2.8			275	12.7	93,208	21.5
	Hokuriku	1	0.6			44	2.0	7,304	1.7
	Tokai	5	2.8			205	9.4	38,780	8.9
	Kinki	6	3.4			324	14.9	35,905	8.3
	Chugoku	3	1.7			135	6.2	24,357	5.6
	Shikoku	2	1.1			100	4.6	6,979	1.6
	Kyushu	3	1.7			157	7.2	40,176	9.3
	Okinawa	0	0.0			0	0.0	0	0.0
	Others (universities or nationwide)	1	0.6			158	7.3	10,015	2.3

Grant category	Region	Number of Venues	(%)	Number of Performances	(%)	Number of Exhibition Days	(%)	Number of Audience	(%)
Activities of Amateur and Other Cultural Organizations		82	46.6	183	64.2			45,325	10.4
	Hokkaido	3	1.7	11	3.9			2,266	0.5
	Tohoku	9	5.1	12	4.2			5,424	1.2
	Northern Kanto and Koshin	7	4.0	14	4.9			934	0.2
	Southern Kanto	17	9.7	33	11.6			13,769	3.2
	Hokuriku	5	2.8	11	3.9			4,174	1.0
	Tokai	1	0.6	1	0.4			704	0.2
	Kinki	13	7.4	17	6.0			8,932	2.1
	Chugoku	5	2.8	8	2.8			4,704	1.1
	Shikoku	6	3.4	44	15.4			1,420	0.3
	Kyushu	3	1.7	4	1.4			1,755	0.4
	Okinawa	0	0.0	0	0.0			0	0.0
	Others (universities or nationwide)	13	7.4	28	9.8			1,243	0.3
Total		176	100	285	100	2,173	100	434,154	100

● Preservation and Utilization Activities for Historic Villages, Townscapes, and Cultural Landscapes
Preservation and Utilization Activities for Folk Cultural Properties
Preservation and Transmission Activities for Traditional Craft Techniques and Cultural Property Conservation Techniques
Number of activities by grant category and region

Grant category	Region	Number of Activities	(%)	Grant category	Region	Number of Activities	(%)	Grant category	Region	Number of Activities	(%)
Preservation and Utilization Activities for Historic Villages, Townscapes, and Cultural Landscapes		10	37.0	Preservation and Utilization Activities for Folk Cultural Properties		13	48.1	Preservation and Transmission Activities for Traditional Craft Techniques and Cultural Property Conservation Techniques		4	14.8
	Hokkaido	0	0.0		Hokkaido	1	3.7		Hokkaido	0	0.0
	Tohoku	0	0.0		Tohoku	2	7.4		Tohoku	0	0.0
	Northern Kanto and Koshin	2	7.4		Northern Kanto and Koshin	0	0.0		Northern Kanto and Koshin	1	3.7
	Southern Kanto	1	3.7		Southern Kanto	4	14.8		Southern Kanto	0	0.0
	Hokuriku	0	0.0		Hokuriku	0	0.0		Hokuriku	0	0.0
	Tokai	1	3.7		Tokai	2	7.4		Tokai	0	0.0
	Kinki	2	7.4		Kinki	0	0.0		Kinki	3	11.1
	Chugoku	1	3.7		Chugoku	0	0.0		Chugoku	0	0.0
	Shikoku	0	0.0		Shikoku	2	7.4		Shikoku	0	0.0
	Kyushu	0	0.0		Kyushu	2	7.4		Kyushu	0	0.0
	Okinawa	1	3.7		Okinawa	0	0.0		Okinawa	0	0.0
	Others (universities or nationwide)	2	7.4		Others (universities or nationwide)	0	0.0		Others (universities or nationwide)	0	0.0
Total		27	100			27	100			27	100

Grant Programs Funded by the Japan Arts Fund

- Due to rounding to the nearest whole unit, totals may not match exactly.
 - The number of audience includes visitors to exhibitions and attendees at lectures.

Activities for Film Festival

● Application, selection, and grant status by grant category and application deadline

Grant category	Application deadline	Number of Applications		Number of Selections		Amount planned to be paid (1,000 yen)		Number of Grants Awarded		Amount actually paid (1,000 yen)	
			(%)		(%)		(%)		(%)		(%)
Film Festival		47	69.1	32	76.2	43,100	90.5	30	75.0	37,500	89.3
	First deadline	24	35.3	20	47.6	22,900	48.1	18	45.0	17,300	41.2
	Second deadline	23	33.8	12	28.6	20,200	42.4	12	30.0	20,200	48.1
Japanese Film Screening Activities		21	30.9	10	23.8	4,500	9.5	10	25.0	4,500	10.7
	First deadline	6	8.8	1	2.4	300	0.6	1	2.5	300	0.7
	Second deadline	15	22.1	9	21.4	4,200	8.8	9	22.5	4,200	10.0
Total		68	100	42	100	47,600	100	40	100	42,000	100

● Number of grants awarded and number of audience by grant category and application deadline

Grant category	Application deadline	Number of Grants Awarded		Number of Audience	
			(%)		(%)
Film Festival		30	75.0	100,646	93.1
	First deadline	18	45.0	31,234	28.9
	Second deadline	12	30.0	69,412	64.2
Japanese Film Screening Activities		10	25.0	7,453	6.9
	First deadline	1	2.5	140	0.1
	Second deadline	9	22.5	7,313	6.8
Total		40	100	108,099	100

Grants under the Subsidies for the Promotion of Culture and Arts Program

- Due to rounding to the nearest whole unit, totals may not match exactly.
 - The number of audience includes visitors to exhibitions and attendees at lectures.

Comprehensive Support Program for Performing Arts (Performing Arts Creation Activities)

● Application, selection, and grant status by grant category and field

Grant category	Field	Number of Applications		Number of Selections		Amount planned to be paid (1,000 yen)		Number of Grants Awarded		Amount actually paid (1,000 yen)	
			(%)		(%)		(%)		(%)		(%)
Multi-Year Planning Support		42	9.3	28	15.1	1,762,284	58.4	28	15.3	1,760,566	59.1
	Music	20	4.4	14	7.5	1,129,470	37.4	14	7.7	1,129,470	37.9
	Dance	8	1.8	4	2.2	324,018	10.7	4	2.2	322,633	10.8
	Drama	7	1.5	6	3.2	223,724	7.4	6	3.3	223,724	7.5
	Traditional performing arts	3	0.7	2	1.1	29,342	1.0	2	1.1	29,009	1.0
	Engei (popular entertainment)	4	0.9	2	1.1	55,730	1.8	2	1.1	55,730	1.9
Performance Project Support (General Category)		375	83.0	150	80.6	1,222,638	40.5	147	80.3	1,185,128	39.8
	Music	115	25.4	40	21.5	499,447	16.5	40	21.9	499,447	16.8
	Dance	42	9.3	18	9.7	220,982	7.3	18	9.8	206,091	6.9
	Drama	152	33.6	59	31.7	353,257	11.7	56	30.6	332,790	11.2
	Traditional performing arts	43	9.5	24	12.9	77,658	2.6	24	13.1	77,139	2.6
	Engei (popular entertainment)	23	5.1	9	4.8	71,294	2.4	9	4.9	69,661	2.3
Performance Project Support (Step-Up Category)		35	7.7	8	4.3	33,078	1.1	8	4.4	33,078	1.1
	Music	8	1.8	1	0.5	2,083	0.1	1	0.5	2,083	0.1
	Dance	4	0.9	0	0.0	0	0.0	0	0.0	0	0.0
	Drama	15	3.3	6	3.2	30,019	1.0	6	3.3	30,019	1.0
	Traditional performing arts	3	0.7	0	0.0	0	0.0	0	0.0	0	0.0
	Engei (popular entertainment)	5	1.1	1	0.5	976	0.03	1	0.5	976	0.03
Total		452	100	186	100	3,018,000	100	183	100	2,978,772	100

● Number of grants awarded, number of performances, and number of audience by grant category and field

Grant category	Field	Number of Grants Awarded		Number of Performances		Number of Audience	
			(%)		(%)		(%)
Multi-Year Planning Support		28	15.3	1,779	32.2	789,903	46.5
	Music	14	7.7	411	7.4	540,336	31.8
	Dance	4	2.2	55	1.0	70,702	4.2
	Drama	6	3.3	276	5.0	42,446	2.5
	Traditional performing arts	2	1.1	26	0.5	9,046	0.5
	Engei (popular entertainment)	2	1.1	1,011	18.3	127,373	7.5
Performance Project Support (General Category)		147	80.3	3,672	66.4	899,289	52.9
	Music	40	21.9	394	7.1	378,533	22.3
	Dance	18	9.8	100	1.8	39,357	2.3
	Drama	56	30.6	775	14.0	127,291	7.5
	Traditional performing arts	24	13.1	170	3.1	50,241	3.0
	Engei (popular entertainment)	9	4.9	2,233	40.4	303,867	17.9
Performance Project Support (Step-Up Category)		8	4.4	79	1.4	10,199	0.6
	Music	1	0.5	4	0.1	906	0.1
	Dance	0	0.0	0	0.0	0	0.0
	Drama	6	3.3	65	1.2	8,875	0.5
	Traditional performing arts	0	0.0	0	0.0	0	0.0
	Engei (popular entertainment)	1	0.5	10	0.2	418	0.02
Total		183	100	5,530	100	1,699,391	100

Grants under the Subsidies for the Promotion of Culture and Arts Program

- Due to rounding to the nearest whole unit, totals may not match exactly.
- The number of audience includes visitors to exhibitions and attendees at lectures.

Comprehensive Support Program for Performing Arts (International Arts Exchange Program)

Application, selection, and grant status by grant category and field

Grant category	Field	Number of Applications	(%)	Number of Selections	(%)	Amount planned to be paid (1,000 yen)	(%)	Number of Grants Awarded	(%)	Amount actually paid (1,000 yen)	(%)
Overseas Performances		49	72.1	24	72.7	313,554	70.8	21	70.0	258,509	66.6
	Music	7	10.3	3	9.1	65,010	14.7	2	6.7	26,868	6.9
	Dance	9	13.2	6	18.2	84,709	19.1	5	16.7	72,504	18.7
	Drama	19	27.9	8	24.2	96,705	21.8	8	26.7	95,525	24.6
	Traditional performing arts	12	17.6	6	18.2	33,736	7.6	5	16.7	30,218	7.8
	Engei (popular entertainment)	2	2.9	1	3.0	33,394	7.5	1	3.3	33,394	8.6
International Co-Production Performances (Overseas Performances)		7	10.3	3	9.1	15,755	3.6	3	10.0	15,755	4.1
	Music	2	2.9	0	0.0	0	0.0	0	0.0	0	0.0
	Dance	1	1.5	0	0.0	0	0.0	0	0.0	0	0.0
	Drama	4	5.9	3	9.1	15,755	3.6	3	10.0	15,755	4.1
	Traditional performing arts	0	0.0	0	0.0	0	0.0	0	0.0	0	0.0
	Engei (popular entertainment)	0	0.0	0	0.0	0	0.0	0	0.0	0	0.0
International Co-Production Performances (Domestic Performances)		6	8.8	3	9.1	13,691	3.1	3	10.0	13,691	3.5
	Music	1	1.5	0	0.0	0	0.0	0	0.0	0	0.0
	Dance	3	4.4	2	6.1	7,342	1.7	2	6.7	7,342	1.9
	Drama	1	1.5	1	3.0	6,349	1.4	1	3.3	6,349	1.6
	Traditional performing arts	1	1.5	0	0.0	0	0.0	0	0.0	0	0.0
	Engei (popular entertainment)	0	0.0	0	0.0	0	0.0	0	0.0	0	0.0
International Festivals		6	8.8	3	9.1	100,000	22.6	3	10.0	100,000	25.8
	Music	1	1.5	0	0.0	0	0.0	0	0.0	0	0.0
	Dance	2	2.9	1	3.0	24,603	5.6	1	3.3	24,603	6.3
	Drama	3	4.4	2	6.1	75,397	17.0	2	6.7	75,397	19.4
	Traditional performing arts	0	0.0	0	0.0	0	0.0	0	0.0	0	0.0
	Engei (popular entertainment)	0	0.0	0	0.0	0	0.0	0	0.0	0	0.0
Total		68	100	33	100	443,000	100	30	100	387,955	100

Number of grants awarded, number of performances, and number of audience by grant category and field

Grant category	Field	Number of Grants Awarded	(%)	Number of Performances	(%)	Number of Audience	(%)
Overseas Performances		21	70.0	312	73.4	107,045	85.4
	Music	2	6.7	16	3.8	14,378	11.5
	Dance	5	16.7	35	8.2	27,799	22.2
	Drama	8	26.7	208	48.9	16,981	13.5
	Traditional performing arts	5	16.7	23	5.4	6,280	5.0
	Engei (popular entertainment)	1	3.3	30	7.1	41,607	33.2
International Co-Production Performances (Overseas Performances)		3	10.0	19	4.5	6,830	5.4
	Music	0	0.0	0	0.0	0	0.0
	Dance	0	0.0	0	0.0	0	0.0
	Drama	3	10.0	19	4.5	6,830	5.4
	Traditional performing arts	0	0.0	0	0.0	0	0.0
	Engei (popular entertainment)	0	0.0	0	0.0	0	0.0
International Co-Production Performances (Domestic Performances)		3	10.0	15	3.5	1,764	1.4
	Music	0	0.0	0	0.0	0	0.0
	Dance	2	6.7	9	2.1	1,262	1.0
	Drama	1	3.3	6	1.4	502	0.4
	Traditional performing arts	0	0.0	0	0.0	0	0.0
	Engei (popular entertainment)	0	0.0	0	0.0	0	0.0
International Festivals		3	10.0	79	18.6	9,726	7.8
	Music	0	0.0	0	0.0	0	0.0
	Dance	1	3.3	26	6.1	2,173	1.7
	Drama	2	6.7	53	12.5	7,553	6.0
	Traditional performing arts	0	0.0	0	0.0	0	0.0
	Engei (popular entertainment)	0	0.0	0	0.0	0	0.0
Total		30	100	425	100	125,365	100

Overseas Performances

International Co-Production Performances (Overseas Performances)
Host nations and regions / Number of host cities

North America	Canada (3)	United States of America (28)							
South America	Brazil (1)								
Asia	China (2)	India (1)	Republic of Korea (1)	Thailand (1)	Turkey (1)	Taiwan (1)			
Africa	Zambia (1)	Zimbabwe (1)							
Europe	Italy (9)	France (5)	Switzerland (4)	Germany (3)	Poland (3)	Spain (3)	Belgium (2)	Portugal (2)	United Kingdom (2)
	Austria (1)	Bulgaria (1)	Czechia (1)	Greece (1)	Luxembourg (1)	Moldova (1)	Monaco (1)	Netherlands (1)	Romania (1)

*The number in parentheses indicates the number of host cities.
*If multiple activities are carried out in the same city, they are counted as one.

International Co-Production Performances (Domestic Performances)
Co-production partner country

Asia	Republic of Korea
Oceania	New Zealand
Europe	Italy

International Festivals
Invited nations and regions

North America	Canada					
Asia	China	Indonesia	Iran	Republic of Korea	Hong Kong	Taiwan
Europe	Belgium	Czechia	Denmark	France	Germany	Iceland
	Italy	Norway	Poland	Spain	United Kingdom	

Grants under the Subsidies for the Promotion of Culture and Arts Program

- Due to rounding to the nearest whole unit, totals may not match exactly.
- The number of audience includes visitors to exhibitions and attendees at lectures.

Comprehensive Support Program for Performing Arts (Arts outreach programs throughout Japan)

Application, selection, and grant status by grant category

Grant category	Number of Applications	(%)	Number of Selections	(%)	Amount planned to be paid (1,000 yen)	(%)	Number of Grants Awarded	(%)	Amount actually paid (1,000 yen)	(%)
Performance and Related Projects Implemented by National-Level Umbrella Organizations	14	93.3	10	90.9	520,000	83.9	10	90.9	513,509	83.7
Digital Archive Support for Revenue Generation*1	1	6.7	1	9.1	100,000	16.1	1	9.1	99,973	16.3
Total	15	100	11	100	620,000	100	11	100	613,482	100

*1 Archive Support Program: 100 works, of which 16 are available for streaming. Multilingual Subtitle Support Program: 12 works. Universalization Support Program: 6 works.

Performance and Related Projects Implemented by National-Level Umbrella Organizations
Number of projects, number of performances, and number of audience by region

Region	Number of Projects	(%)	Number of Performances	(%)	Number of Audience	(%)
Hokkaido	9	8.7	10	6.0	3,157	3.2
Tohoku	20	19.4	21	12.7	6,510	6.6
Northern Kanto and Koshin	8	7.8	9	5.4	20,998	21.3
Southern Kanto	7	6.8	7	4.2	2,291	2.3
Hokuriku	4	3.9	4	2.4	1,854	1.9
Tokai	12	11.7	13	7.8	5,801	5.9
Kinki	14	13.6	37	22.3	18,387	18.7
Chugoku	6	5.8	6	3.6	1,797	1.8
Shikoku	3	2.9	3	1.8	775	0.8
Kyushu	12	11.7	44	26.5	34,013	34.6
Okinawa	8	7.8	12	7.2	2,847	2.9
Total	103	100	166	100	98,430	100

Comprehensive Support Program for Performing Arts (Activities and initiatives for upcoming artists)

Application, selection, and grant status by field

Field	Number of Applications	(%)	Number of Selections	(%)	Amount planned to be paid (1,000 yen)	(%)	Number of Grants Awarded	(%)	Amount actually paid (1,000 yen)	(%)
Music	9	14.8	4	7.8	67,170	14.6	4	8.2	65,959	14.7
Dance	8	13.1	7	13.7	132,865	28.8	7	14.3	132,672	29.5
Drama	17	27.9	14	27.5	170,465	37.0	14	28.6	170,226	37.9
Traditional performing arts	12	19.7	12	23.5	21,950	4.8	12	24.5	20,549	4.6
Engei (popular entertainment)	4	6.6	4	7.8	15,305	3.3	3	6.1	7,334	1.6
Fine arts, media arts, and works that span multiple fields	11	18.0	10	19.6	53,245	11.5	9	18.4	52,666	11.7
Total	61	100	51	100	461,000	100	49	100	449,406	100

Number of grants awarded and number of creators and artists by field

Field	Number of Grants Awarded	(%)	Number of Creators and Artists	(%)
Music	4	8.2	98	3.0
Dance	7	14.3	1,139	35.4
Drama	14	28.6	735	22.9
Traditional performing arts	12	24.5	289	9.0
Engei (popular entertainment)	3	6.1	207	6.4
Fine arts, media arts, and works that span multiple fields	9	18.4	746	23.2
Total	49	100	3,214	100

Grants under the Subsidies for the Promotion of Culture and Arts Program

- Due to rounding to the nearest whole unit, totals may not match exactly.
- The number of audience includes visitors to exhibitions and attendees at lectures.

Activities for Enhancing Theaters and Concert Halls

Application, selection, and grant status by grant category

Grant category	Number of Applications	(%)	Number of Selections	(%)	Amount planned to be paid (1,000 yen)	(%)	Number of Grants Awarded	(%)	Amount actually paid (1,000 yen)	(%)
Comprehensive Support for Enhancement of Theaters and Concert Halls Program	23	8.2	15	10.5	702,000	46.1	15	10.5	693,058	47.3
Regional Core Theatres and Concert Halls Revitalization Program	239	85.7	119	83.2	663,700	43.6	119	83.2	618,687	42.2
Co-Production Support Program	2	0.7	2	1.4	105,000	6.9	2	1.4	104,386	7.1
Theatre and Concert Hall Network Enhancement Program	15	5.4	7	4.9	50,842	3.3	7	4.9	50,527	3.4
Total	279	100	143	100	1,521,542	100	143	100	1,466,658	100

Number of activities and number of audience by grant category and activity

Grant category	Activity	Number of Activities	(%)	Number of Audience	(%)
Comprehensive Support for Enhancement of Theaters and Concert Halls Program		277	32.0	620,272	46.3
	Performing art	108	12.5	236,863	17.7
	Fostering creators	66	7.6	28,469	2.1
	Dissemination projects	103	11.9	354,940	26.5
Regional Core Theatres and Concert Halls Revitalization Program		537	62.0	664,580	49.7
	Performing art	171	19.7	154,616	11.6
	Fostering creators	108	12.5	55,486	4.1
	Dissemination projects	258	29.8	454,478	34.0
Co-Production Support Program		11	1.3	16,861	1.3
Theatre and Concert Hall Network Enhancement Program		41	4.7	36,763	2.7
Total		866	100	1,338,476	100

Number of adopted theaters and concert halls and number of activities by region

Region	Number of Adopted theaters and concert halls	(%)	Number of Audience	(%)
Hokkaido	11	9.8	50	5.8
Tohoku	8	7.1	31	3.6
Northern Kanto and Koshin	6	5.4	51	5.9
Southern Kanto	22	19.6	265	30.6
Hokuriku	7	6.3	86	9.9
Tokai	11	9.8	96	11.1
Kinki	18	16.1	169	19.5
Chugoku	7	6.3	34	3.9
Shikoku	6	5.4	31	3.6
Kyushu	16	14.3	53	6.1
Okinawa	0	0.0	0	0.0
Total	112	100	866	100

Co-Production Support Program
Theatre and Concert Hall Network Enhancement Program
Number of adopted theaters and concert halls by region

Region	Co-Production Support Program	(%)	Theatre and Concert Hall Network Enhancement Program	(%)
Hokkaido	1	9.1	6	14.6
Tohoku	2	18.2	2	4.9
Northern Kanto and Koshin	0	0.0	2	4.9
Southern Kanto	2	18.2	1	2.4
Hokuriku	1	9.1	1	2.4
Tokai	0	0.0	4	9.8
Kinki	3	27.3	6	14.6
Chugoku	0	0.0	3	7.3
Shikoku	0	0.0	3	7.3
Kyushu	2	18.2	13	31.7
Okinawa	0	0.0	0	0.0
Total	11	100	41	100

Grants under the Subsidies for the Promotion of Culture and Arts Program

- Due to rounding to the nearest whole unit, totals may not match exactly.
 - The number of audience includes visitors to exhibitions and attendees at lectures.

Activities to Produce Superior Japanese Films

● Application, selection, and grant status by grant category and application deadline

Grant category	Application deadline	Number of Applications		Number of Selections		Amount planned to be paid (1,000 yen)		Number of Grants Awarded		Amount actually paid (1,000 yen)	
			(%)		(%)		(%)		(%)		(%)
Feature Films		115	75.7	30	65.2	454,544	80.4	28	65.1	431,474	82.9
	First deadline	46	30.3	11	23.9	150,178	26.6	10	23.3	137,478	26.4
	Second deadline	69	45.4	19	41.3	304,366	53.9	18	41.9	293,996	56.5
Documentary Films		30	19.7	13	28.3	66,630	11.8	13	30.2	66,590	12.8
	First deadline	13	8.6	5	10.9	32,980	5.8	5	11.6	32,980	6.3
	Second deadline	17	11.2	8	17.4	33,650	6.0	8	18.6	33,610	6.5
Animated Films		7	4.6	3	6.5	43,870	7.8	2	4.7	22,470	4.3
	First deadline	1	0.7	1	2.2	21,400	3.8	0	0.0	0	0.0
	Second deadline	6	3.9	2	4.3	22,470	4.0	2	4.7	22,470	4.3
Total		152	100	46	100	565,044	100	43	100	520,534	100

Commissioned Programs under the Subsidies for the Promotion of Culture and Arts Program

- Due to rounding to the nearest whole unit, totals may not match exactly.
 - The number of audience includes visitors to exhibitions and attendees at lectures.

Comprehensive Support Program for Performing Arts (School Tour Performance)

● Application, selection, and project implementation status by grant category and field

Grant category	Field	Number of Applications		Number of Selections		Number of Implementations		Total Amount (1,000 yen)	
			(%)		(%)		(%)		(%)
Single-Year (Category A)		328	67.8	130	80.7	130	76.5	3,003,951	79.2
	Music	109	22.5	34	21.1	34	20.0	1,596,439	42.1
	Dance	17	3.5	11	6.8	11	6.5	292,981	7.7
	Drama	72	14.9	40	24.8	40	23.5	608,888	16.1
	Traditional performing arts	125	25.8	42	26.1	42	24.7	454,426	12.0
	Media arts	5	1.0	3	1.9	3	1.8	51,217	1.4
Multi-Year (Category B)¹		0	0.0	0	0.0	9	5.3	336,569	8.9
	Music	0	0.0	0	0.0	2	1.2	136,110	3.6
	Dance	0	0.0	0	0.0	2	1.2	62,071	1.6
	Drama	0	0.0	0	0.0	4	2.4	113,800	3.0
	Traditional performing arts	0	0.0	0	0.0	1	0.6	24,588	0.6
	Media arts	0	0.0	0	0.0	0	0.0	0	0.0
Remote Islands, Rural Areas, and Small Schools (Category C)		156	32.2	31	19.3	31	18.2	451,384	11.9
	Music	71	14.7	10	6.2	10	5.9	238,351	6.3
	Dance	5	1.0	2	1.2	2	1.2	50,325	1.3
	Drama	40	8.3	10	6.2	10	5.9	80,993	2.1
	Traditional performing arts	38	7.9	8	5.0	8	4.7	73,348	1.9
	Media arts	2	0.4	1	0.6	1	0.6	8,367	0.2
Total		484	100	161	100	170	100	3,791,904	100

¹ In FY2024, only grants will be made to organizations that have been selected for continued adoption.

● Number of adopted theaters and concert halls and number of activities by region

Region	Number of Schools	(%)	Number of Audience	(%)
Hokkaido	35	2.1	5,833	1.5
Tohoku	127	7.6	22,327	5.7
Northern Kanto and Koshin	151	9.0	33,260	8.4
Southern Kanto	321	19.2	102,435	26.0
Hokuriku	80	4.8	16,220	4.1
Tokai	169	10.1	34,811	8.8
Kinki	329	19.7	81,414	20.6
Chugoku	151	9.0	33,916	8.6
Shikoku	77	4.6	16,259	4.1
Kyushu	220	13.2	45,038	11.4
Okinawa	12	0.7	3,014	0.8
Total	1,672	100	394,527	100

● Survey Results for Participating Schools

(Q) What effects did the program have on students?
 (Multiple answers allowed)

(N=1,672)

Choices	Number of Responding Schools	(%)
It increased interest in performing arts.	1,548	92.6
It fostered rich hearts, sensibilities, and creativity.	1,459	87.3
It produced reactions that could not be obtained through CDs or DVDs.	1,079	64.5
It provided an opportunity to discover and understand the students' individuality and abilities.	704	42.1
It increased interest in the abilities of outside experts.	689	41.2
It allowed students to become familiar with and deepen their understanding of Japanese culture and the arts.	576	34.4
It helped to stimulate communication.	524	31.3
It increased motivation for academic studies.	521	31.2
It served as a catalyst for cultural and artistic events to become established as school events.	479	28.6
It deepened self-awareness and understanding of others.	359	21.5
There are anecdotes and examples of changes and effects seen in students, teachers, and the school.	327	19.6
It was useful for cultural club activities.	299	17.9
It was useful for improving teaching methods in school education.	281	16.8
It fostered greater interest in, and a deeper understanding of, people and cultures of other countries.	201	12.0

FY2024 Project Data Collection

Support Program under the Japan Creator Support Fund

- Continuing projects from fiscal year 2024 to fiscal year 2026 -

- Due to rounding to the nearest whole unit, totals may not match exactly.
- The number of audience includes visitors to exhibitions and attendees at lectures.

Creator & Artist Development Support Program

● Application, selection, and grant and project implementation status by field

Field	Number of Applications	(%)	Number of Selections	(%)	Amount actually paid (1,000 yen)	(%)
Performing arts	74	61.7	16	55.2	2,384,000	53.2
Media arts	24	20.0	7	24.1	1,210,282	27.0
Contemporary art	9	7.5	2	6.9	277,966	6.2
Emerging transdisciplinary genres	13	10.8	4	13.8	610,000	13.6
Total	120	100	29	100	4,482,248	100

● Number of supported creators and number of advisors by field

Field	Number of Supported Creators	(%)	Number of Advisors	(%)
Performing arts	337	68.5	154	53.7
Media arts	61	12.4	73	25.4
Contemporary art	15	3.0	9	3.1
Emerging transdisciplinary genres	79	16.1	51	17.8
Total	492	100	287	100

*Projects from fiscal year 2024 to fiscal year 2026 (As of March 2025)

Support Program for Cultural Facilities Function Enhancement

● Application, selection, and grant status by field

Type of Institution	Number of Applications	(%)	Number of Selections	(%)	Amount actually paid (1,000 yen)	(%)
Museums	21	33.3	4	30.8	847,000	62.4
Theaters and Concert halls	42	66.7	9	69.2	511,065	37.6
Total	63	100	13	100	1,358,065	100

● Number of supported creators and number of advisors by field

Type of Institution	Number of Supported Creators	(%)	Number of Advisors	(%)
Museums	40	34.8	29	34.1
Theaters and Concert halls	75	65.2	56	65.9
Total	115	100	85	100

*Projects from fiscal year 2024 to fiscal year 2026 (As of March 2025)

Grant Programs Funded by Donations

New Orchestra Support Program

- Continuing projects from fiscal year 2023 to fiscal year 2025 -

● Application, selection, and grant status

Number of Applications ^{*1}	Number of Selections ^{*1}	Amount planned to be paid (1,000 yen) ^{*2}	Number of Grants Awarded	Amount actually paid (1,000 yen) ^{*2,3}
43	3	257,711	3	362,064

*1 Combined first-time applications and re-applications in FY2023

*2 Amount for the second year (in FY2024) of the three-year grant

*3 Including carryover from fiscal year 2023 (110,000,000 yen)

List of Supporting Companies and Organizations

The Japan Arts Fund was established with capital contributions from the government and investment and donations from the private sector, and uses investment profits to subsidize cultural and artistic activities in Japan, thereby promoting and disseminating arts and culture. The following companies and organizations supported the fund's purpose and made generous donations to help establish it. We would like to express our deepest gratitude for their support.

Supporting companies and organizations

Construction Asunaro Aoki Construction Co., Ltd. HAZAMA ANDO CORPORATION OBAYASHI CORPORATION KAJIMA CORPORATION Kumagai Gumi Co., Ltd. Sato Kogyo Co., Ltd. SHIMIZU CORPORATION Sekisui House, Ltd. TAISEI CORPORATION TAKENAKA CORPORATION TODA CORPORATION TOBISHIMA CORPORATION NISHIMATSU CONSTRUCTION CO., LTD. HASEKO Corporation Fujita Corporation MAEDA CORPORATION	Petroleum and Steel Idemitsu Kosan Co., Ltd. NIPPON STEEL CORPORATION Machinery and Precision Machinery NSK Ltd. HOYA CORPORATION Ricoh Company, Ltd. Electronics Oki Electric Industry Co., Ltd. Canon Inc. KONICA MINOLTA, INC. JVCKENWOOD Corporation Sharp Corporation Sony Corporation TDK Corporation TOSHIBA CORPORATION NIPPON COLUMBIA CO., LTD. IBM Japan, Ltd. NEC Corporation PIONEER CORPORATION Panasonic Corporation Hitachi, Ltd. Fujitsu Limited Mitsubishi Electric Corporation Murata Manufacturing Co., Ltd.	Department Store Takashimaya Company, Limited Isetan Mitsukoshi Holdings Ltd. Banking SBI Shinsei Bank, Limited Mizuho Bank, Ltd. Mizuho Trust & Banking Co., Ltd. Sumitomo Mitsui Banking Corporation Sumitomo Mitsui Trust Bank, Limited MUFG Bank, Ltd Mitsubishi UFJ Trust and Banking Corporation The Bank of Yokohama, Ltd. Resona Bank, Limited Securities SMBC Nikko Securities Inc. Daiwa Securities Group Inc. Nomura Securities Co., Ltd. Mizuho Securities Co., Ltd. Mitsubishi UFJ Morgan Stanley Securities Co., Ltd. Yamaichi Securities Co., Ltd. Insurance AXA Life Insurance Co., Ltd. Asahi Mutual Life Insurance Company The Gibraltar Life Insurance Co., Ltd. SUMITOMO LIFE INSURANCE COMPANY Sampo Japan Insurance Inc. The Dai-ichi Life Insurance Company, Limited TAIJU LIFE INSURANCE COMPANY LIMITED DAIDO LIFE INSURANCE COMPANY Taiyo Life Insurance Company D&D FINANCIAL LIFE INSURANCE COMPANY Tokio Marine & Nichido Fire Insurance Co., Ltd. Nippon Life Insurance Company Fukuoku Mutual Life Insurance Company Mitsui Sumitomo Insurance Company, Limited Meiji Yasuda Life Insurance Company	Real estate Sumitomo Realty & Development Co., Ltd. TOKYU LAND CORPORATION Mitsui Fudosan Co., Ltd. MITSUBISHI ESTATE CO., LTD. Transportation Katolec Corporation ALL NIPPON AIRWAYS CO., LTD. TOKYU CORPORATION Japan Airlines Co., Ltd. Tourism JTB Corp. FUJITA KANKO INC. Publishing KODANSHA Ltd. Shogakukan Inc. Advertising DENTSU INC. Hakuodo Incorporated Telecom and Other Seieikai National Federation of Tax Professionals of Japan Cultural Foundation Japan Tobacco Inc. NTT EAST, Inc.
Food Asahi Group Holdings, Ltd. Ajinomoto Co., Inc. Kikkoman Corporation Kirin Holdings Company, Limited Sapporo Holdings Limited Suntory Holdings Limited MEGMILK SNOW BRAND Co., Ltd.	Textile TOYOBO Co., Ltd. Toray Industries, Inc. Wacoal Holdings Corp. Pulp and Paper Oji Holdings Corporation Nippon Paper Industries Co., Ltd. Chemical and Pharmaceutical Kao Corporation Shiseido Company, Limited SEKISUI CHEMICAL CO., LTD. DAIICHI SANKYO COMPANY, LIMITED Mitsubishi Chemical Corporation Resonac Holdings Corporation	Transport Equipment TOYOTA MOTOR CORPORATION Nissan Motor Co., Ltd. Honda Motor Co., Ltd. Mitsubishi Heavy Industries, Ltd. Musical Instrument Kawai Musical Instruments Manufacturing Co., Ltd. Yamaha Corporation Printing Dai Nippon Printing Co., Ltd TOPPAN Holdings Inc.	

As of July 2025, in no particular order

Japan Arts Council

Grant Program Annual Report 2024-2025

Published by:
Japan Arts Council
Management Planning Department, Grants Secretariat
4-1 Hayabusa-cho, Chiyoda-ku,
Tokyo 102-8656
TEL +81 (0)3 3265 6302
WEB <https://www.ntj.jac.go.jp/grant/>



DESIGN : Get Up&Design Inc.



This report and other published reports are also available at the URL below.
<https://www.ntj.jac.go.jp/grant/annualreport/>

Published in January 2026